

Metabolic Activity of Cytochrome P450 Isoforms in Hepatocytes Cryopreserved with Wheat Protein Extract

Mélanie Grondin, Francine Hamel, Fathey Sarhan, and Diana A. Averill-Bates

Université du Québec à Montréal, Département des Sciences Biologiques, Montréal, Québec, Canada

Received February 26, 2008; accepted July 9, 2008

ABSTRACT:

The drug discovery and development process requires adequate safety testing for drug toxicity before new drugs can be administered to patients. Hepatocytes are used *in vitro* to screen compounds for hepatotoxicity, induction of drug-metabolizing enzymes such as cytochrome P450 (P450) isoforms, drug-drug interactions, and establish human relevance for metabolism. Cryopreservation makes it possible to preserve a large quantity of functional hepatocytes. Techniques for cryopreservation of hepatocytes are mainly based on dimethyl sulfoxide (DMSO). However, analyses of metabolic capacities of cryopreserved hepatocytes are often limited by loss of functional integrity of hepatocytes after thawing. Therefore, it is necessary to improve techniques of cryopreservation. We have developed a new cryopreservation technology for mammalian cells based on a wheat protein extract (WPE).

We determined whether the WPE can better preserve activities of major P450 isoforms both in suspension and monolayer cultures of hepatocytes. This was achieved by comparing basal and inducible or metabolic activities of isoforms CYP1A1, CYP1A2, CYP2C6, CYP2D2, and CYP3A in rat hepatocytes that were cryopreserved with WPE, relative to fresh cells and those cryopreserved with DMSO. We conclusively show that rat hepatocytes cryopreserved with WPE retain their metabolic competency and their ability to respond to classical P450 inducers when compared with freshly isolated hepatocytes. These findings clearly show that WPEs are an excellent cryopreservant for rat hepatocytes. They are an efficient, nontoxic, economic natural product and universal cryoprotectant that is superior to DMSO, which has limitations because of cellular toxicity.

The pharmaceutical industry is constantly developing new potential drug candidates for the treatment of a wide range of diseases. Adequate safety testing for drug toxicity is required by regulatory agencies (e.g., Food and Drug Administration) before new drugs can be administered to patients. In addition to the parent drug, safety of drug metabolites must also be considered when conducting safety testing programs for new drug candidates. The liver is a major target of unacceptable human drug toxicity and is often responsible for withdrawal of drugs from clinical use or their elimination late in the drug development process. About 20% of new drug candidates are removed from the drug development process as a consequence of unacceptable toxicity based on animal studies (Sistare and DeGeorge, 2007). Another major reason for failure of new drug candidates is adverse drug reactions (Utrecht, 2006). In 1994, 2 million adverse drug reactions and 106,000 fatalities occurred in hospitalized patients in the United States, representing an incidence of 6.7 and 0.32%, respectively (Lazarou et al., 1998).

Pharmaceutical *in vivo* testing is extremely expensive in terms of time and cost. Toxicology studies are usually conducted in animals as

the basis for predicting potential human toxicities. However, there is concern about interspecies differences between animal models (e.g., rodents) and their relevance to the human context. Furthermore, current methods for assessing preclinical safety using laboratory animals often fail to detect target organ toxicity, which occurs in about 50% of cases for liver toxicity (Greaves et al., 2004). To improve the safety and efficiency of the drug discovery/development process in the future, it is important to develop improved technologies with human relevance for drug testing in preclinical trials (Sistare and DeGeorge, 2007). Detection of drug toxicity as early as possible would minimize the economic impact of withdrawing a drug late in the drug development process.

There is considerable interest in developing new and improved, physiologically based *in vitro* models for early drug toxicity screening, which adequately reflect the human *in vivo* situation. *In vitro* systems such as organ slices and primary cell models can be used to detect a variety of target organ toxicities. For liver toxicity, hepatocytes isolated from rodents, nonrodents, and humans can be useful to screen compounds *in vitro* for induction of drug-metabolizing enzymes and drug-drug interactions and to establish human relevance for metabolism (O'Brien and Siraki, 2005; Sivaraman et al., 2005). In fact, the human hepatocyte is the *in vitro* model that can produce a drug metabolic profile that is most similar to the human liver (Gómez-Lechón et al., 2003). However, the use of human hepatocytes is

Financial support was provided by grants from the Natural Sciences and Engineering Research Council of Canada (NSERC) (to D.A.B., F.S.).

Article, publication date, and citation information can be found at <http://dmd.aspetjournals.org>.

doi:10.1124/dmd.108.021162.

ABBREVIATIONS: DMSO, dimethyl sulfoxide; P450, cytochrome P450; WPE, wheat protein extract; WME, Williams' medium E; PI, propidium iodide; FBS, fetal bovine serum; CEC, 3-cyano-7-ethoxycoumarin; MFC, 7-methoxy-4-(trifluoro-methyl)coumarin; AMMC, 3-[2-(*N,N*-diethyl-*N*-methylammonium) ethyl]-7-methoxy-4-methylcoumarin; DFB, [3-[[3,4-difluorobenzyl]oxy]-5,5-dimethyl-4-[4-(methyl-sulfonyl)phenyl]furan-2(5*H*)-one]; LDH, lactate dehydrogenase; I, induced; NI, noninduced.

somewhat limited because of lack of availability and the high cost of commercially available sources. Cryopreservation offers a viable alternative to circumvent these problems.

Several methods for cryopreservation of hepatocytes have been developed and are mainly based on dimethyl sulfoxide (DMSO) (Diener et al., 1993). However, analyses of metabolic capacities of cryopreserved hepatocytes are often limited by loss of functional integrity of hepatocytes after thawing. Protocols for cryopreservation of hepatocytes were optimized by the addition of sugars, osmoregulators, antioxidants, or caspase inhibitors (e.g., UW solution, CryoStor Cell Freezing Media, BioLife Solutions, Bothell, WA) to increase post-thaw viability and to maintain functional activity for the majority of metabolic enzymes (Li et al., 1999). However, decreased attachment efficiencies of cryopreserved hepatocytes still remain an important problem, and their responsiveness in culture to inducers of cytochrome P450 (P450) isoenzymes requires improvement (Li et al., 1999). Drug metabolism studies involving P450 enzyme induction require prolonged culturing of hepatocytes as attached monolayers (Li, 2007). However, inherent problems with the rapid loss of P450 activity in fresh and cryopreserved hepatocytes still remain when they are maintained as monolayer cultures. We recently reported the use of a plant protein extract [wheat protein extract (WPE)] as a novel and nontoxic cryoprotector that improved hepatospecific functions compared with the DMSO standard (Hamel et al., 2006).

In this report, we extend our cryopreservation studies by characterizing the activities of four major P450 isoforms in thawed rat hepatocytes following cryopreservation with WPE. The activities of P450 isoforms allow a critical evaluation of the quality and metabolic capacity of cryopreserved cells on thawing. We have determined whether the WPE can better preserve activities of P450 isoforms both in suspension and monolayer cultures of hepatocytes. This was achieved by comparing basal and inducible or metabolic activities of isoforms CYP1A1, CYP1A2, CYP2C6, CYP2D2, and CYP3A in rat hepatocytes that were cryopreserved with WPE relative to fresh cells and those cryopreserved with DMSO.

Materials and Methods

Chemicals. Collagenase, insulin, Williams' medium E (WME), DMSO, dexamethasone, phenobarbital, dextromethorphan, propidium iodide (PI), and other chemicals were from Sigma Chemical Co. (St. Louis, MO). Leibovitz medium, gentamicin, minimal essential medium vitamins, and Matrigel were from Gibco/Life Technologies (Burlington, ON, Canada). Fetal bovine serum (FBS) was from Medicorp (Montreal, QC, Canada). 3-Cyano-7-ethoxycoumarin (CEC), 7-methoxy-4-(trifluoro-methyl)coumarin (MFC), and 3-[2-(*N,N*-diethyl-*N*-methylammonium) ethyl]-7-methoxy-4-methylcoumarin (AMMC) were purchased from BD Gentest (Mississauga, ON, Canada), and 3-[3-(4-difluorobenzyl)oxy]-5,5-dimethyl-4-[4-(methylsulfonyl)phenyl]furan-2(5*H*)-one] (DFB) was offered by Merck Frosst (Montreal, QC, Canada) (Nicoll-Griffith et al., 2004).

Plant Materials and Growth Conditions. Winter wheat genotype [*Triticum aestivum* L. cv Clair, LT₅₀ (lethal temperature that kills 50% of seedlings) -19°C] was used in this study. Wheat plants were grown and treated as previously described (Danyluk et al., 1998). Briefly, plants were grown for 10 days under a 16-h/day photoperiod with a light intensity of 250 $\mu\text{mol}/\text{m}^2/\text{s}$ at 20°C.

Total Protein Extraction. The aerial parts of seedlings were collected and blended until a homogeneous solution was obtained with cold ultrapure water. The homogenate was filtered through three layers of miracloth and centrifuged at 30,000*g* for 45 min at 4°C. The pH of the supernatant was adjusted to 7.4 and sterilized using a 0.22-mm filter. The extract was concentrated by freeze-drying and stored at -20°C. The dried powder extract was resuspended in ice-cold WME before being added to the hepatocyte suspension (Hamel et al., 2006).

Hepatocyte Isolation. Hepatocytes were isolated from male Sprague-Dawley rats (140–180 g) (Charles River Canada, Saint-Constant, QC, Canada)

by the two-step collagenase digestion technique (Seglen, 1976; Guillemette et al., 1993). Animals were maintained and handled in accordance with the Canadian Council on Animal Care guidelines (Olfert et al., 1993) for care and use of experimental animals. Cell viability was evaluated by flow cytometry (FACScan, Becton Dickinson, Oakville, ON, Canada) with 2 μM PI (Reader et al., 1993).

Cryopreservation of Hepatocytes. Immediately after isolation, the hepatocyte suspension (5×10^6 cells/ml) was added to ice-cold WME supplemented with 10% FBS and 60 mg of WPE in cold cryovials. Positive (15% DMSO and 50% FBS) and negative (WME) controls were also prepared. Cells in cryovials were frozen at a cooling rate of 1°C/min in a controlled freezing container (Nalgene, Rochester, NY) to -80°C for 1 day and then transferred to liquid nitrogen for 7 days (Hamel et al., 2006).

Thawing of Cryopreserved Hepatocytes. Frozen cells were thawed quickly by gentle agitation in a 37°C water bath, and viability was determined with 2 μM PI (70–80%). Immediately after thawing, the hepatocyte suspension was diluted 10-fold with cold WME medium. After centrifugation (4°C, 50g, 2 min), hepatocytes were suspended in 10 ml of WME medium and washed twice. After washing, dead cells were removed by 30% isotonic Percoll centrifugation. Recovery of cells after this step was 85%. The viability of rat hepatocytes following cryopreservation with WPE was significantly higher ($P < 0.05$) at $72.15 \pm 1.35\%$ compared with $66.93 \pm 2.25\%$ for DMSO. For fresh cells, viability was $92.67 \pm 2.89\%$. Post-thaw viability was very low in negative (WME) controls (1.6%).

For tests in suspension, hepatocytes were adjusted to 1×10^3 cells/ μl . For monolayer cultures, hepatocytes (2.5×10^5 cells/ml) were plated in 4-well Corning plastic tissue culture plates (Corning Glassworks, Corning, NY), noncoated or coated with Matrigel, in WME supplemented with insulin (0.2 mg/ml) and gentamicin (50 mg/ml) in a humidified atmosphere of 5% CO₂ and 95% air at 37°C. After 3 h, medium was changed, and cells were incubated overnight in Leibovitz medium supplemented with insulin and gentamicin.

Cellular Morphology. Morphology of hepatocytes, in regular plastic tissue culture plates or in those coated with Matrigel, was evaluated by microscopy (Carl Zeiss Ltd., Montreal, QC, Canada). Photographs were taken by digital camera (Camera CCD, Sony DXC-950P; Empix Imaging, Inc., Mississauga, ON, Canada), and images were analyzed using Northern Eclipse software (Empix Imaging, Inc.).

Viability. Lactate dehydrogenase (LDH) activity was determined in the medium of seeded, adherent hepatocytes (Moldéus et al., 1978). The hepatocyte culture medium was removed, and activity of LDH released into the medium from adherent cells was quantified. The total amount of LDH activity was obtained by lysis of live cells with 10% Triton X-100 (Moffatt et al., 1996). Attachment efficiency was evaluated by LDH activity in freshly isolated and attached cryopreserved hepatocytes after 24 h in culture.

Enzymatic Activity of P450 Isoforms. The basal enzymatic activities were measured in hepatocyte suspensions immediately post-thaw. For induction of P450 activities, hepatocytes were cultured for 24 h and then treated for 48 h with benzo[*a*]pyrene (10 μM , CYP1A1), phenobarbital (50 μM , CYP2C6), or dexamethasone (50 μM , CYP3A1/2). Dextromethorphan (50 μM) was used as a metabolic substrate for CYP2D2. Cells were washed twice with phosphate-buffered saline to remove these compounds. P450 activities were measured using fluorescent substrates for P450 isoforms CYP1A1/2 (CEC, excitation: 410 nm, emission: 450 nm), CYP2D2 (AMMC, excitation: 410 nm, emission: 450 nm), CYP2C6 (MFC, excitation: 410 nm, emission: 500 nm), and CYP3A1/2 (DFB, excitation: 340 nm, emission: 450 nm). Cells were incubated with appropriate 25 μM substrates for different times between 0 and 30 min. After the incubation, 150 μl of cell suspension was added to 150 μl of acetonitrile or 60% acetonitrile with 40% Tris base (pH 10, DFB). Fluorescence was detected using a spectrofluorimeter (SPECTRAFluor Plus, Tecan, Durham, NC).

Statistical Analysis. Results were expressed as mean \pm S.E.M. of at least three replicate dishes for each condition with a minimum of three experimental repeats using different cell preparations from separate animals. Comparison between groups and analysis for differences between means of control and treated groups were performed using analysis of variance followed by the post hoc Newman-Keuls test ($P < 0.05$). The threshold for statistical significance was $P < 0.05$ (*), $P < 0.01$ (**), and $P < 0.001$ (***)

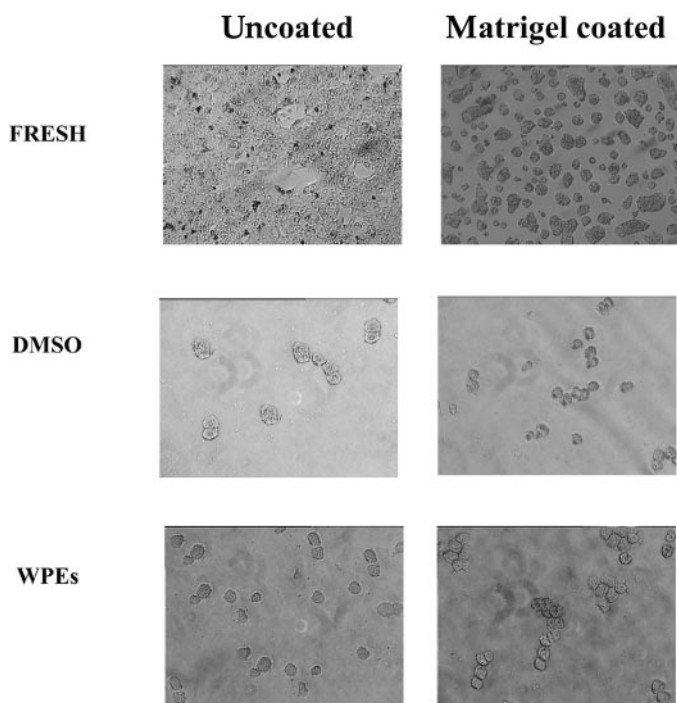


FIG. 1. Cellular morphology of rat hepatocytes cryopreserved with WPE. Cellular morphology was visualized 24 h after seeding thawed rat hepatocytes on either regular plastic dishes or Matrigel-coated dishes following cryopreservation for 7 days in WME 10% FBS supplemented with 15% DMSO and 50% FBS (DMSO) or with 60 mg of WPE (WPE). Freshly isolated hepatocytes (FRESH) served as reference. Hepatocytes (250×10^3) were visualized by microscopy (magnification 100 \times). Photographs are from one representative experiment, which was repeated at least three times.

Results

Cellular Morphology of Rat Hepatocytes Cryopreserved with WPE. It is widely recognized that cellular adherence is disturbed in cryopreserved cells on thawing (Terry et al., 2006a). Consequently, we evaluated whether cryopreservation with WPE could improve the cellular morphology of hepatocytes following thawing. Freshly isolated hepatocytes exhibited pronounced differences in morphology, depending on whether they were cultured on regular plastic dishes or on Matrigel-coated dishes (Fig. 1). Fresh cells exhibited a spread-out phenotype on the plastic surface when compared with cryopreserved cells. However, when cultured on Matrigel, fresh cells rolled together and formed three-dimensional spheroids. When hepatocytes were cryopreserved with WPE or DMSO, they were still much rounder than fresh cells. The cryopreserved cells did not form spheroids on Matrigel, in contrast to freshly isolated cells. However, cells that were cryopreserved with WPE did appear to form small colonies of cells, more so than cells that were cryopreserved with DMSO. Cryopreservation with WPE improved the morphology of hepatocytes to some extent compared with those cryopreserved with DMSO. However, the rounded morphology was still quite different from that of fresh cells. Attachment efficiencies for cells that were cryopreserved with WPE and DMSO were similar with values of 50.9 ± 2.9 and $50.3 \pm 4.1\%$, respectively, relative to fresh hepatocytes as reference control (100%).

Basal Activities of P450 Isoforms in Cryopreserved Hepatocytes. The activities of P450 isoforms are one of the most unstable functions in isolated hepatocytes (Grant et al., 1985; Paine, 1990) and are highly sensitive to changes in cellular environment. For example, activities of P450 isoforms such as CYP1A2 and CYP3A4 decrease by approximately 50% per day in culture (Li, 2007). Therefore, we determined whether the activities of four major P450 isoforms would

remain at levels comparable with fresh cells in suspension and monolayer cultures of rat hepatocytes that were cryopreserved with WPE.

The basal activities of CYP3A1/2 and CYP2D2 were similar in both WPE-cryopreserved and freshly isolated hepatocytes (Fig. 2, A and B). However, for hepatocytes that were cryopreserved with DMSO, the enzymatic activities of isoforms CYP3A1/2 and CYP2D2 were decreased by at least 50% (Fig. 2, A and B) when compared with fresh hepatocytes. For CYP1A1/2 and CYP2C6, basal activities in hepatocytes that had been cryopreserved with WPE or DMSO were similar and slightly higher than those in fresh cells (Fig. 2, C and D). These data show that cryopreservation of hepatocytes with WPE is advantageous when compared with DMSO.

Induction of P450 Isoforms. Fresh and thawed cryopreserved hepatocytes were maintained in culture during 3 days either in plastic or Matrigel-coated dishes. Subsequently, the induction or metabolic activity of the four P450 isoforms was determined in hepatocytes that had been cryopreserved with WPE compared with fresh cells and those cryopreserved with DMSO.

Regular Plastic Dishes. For isoforms CYP3A1/2, basal activity after 3 days in culture was lower for cryopreserved cells when compared with fresh hepatocytes (Fig. 3A). After induction with dexamethasone, CYP3A1/2 activity was also lower for cryopreserved cells compared with fresh cells (Fig. 3A). However, induced CYP3A1/2 activity was higher in hepatocytes that were cryopreserved with WPE compared with DMSO. The induction of enzymatic activity [induced/noninduced (I/N)] for fresh cells (2.08, 30 min) and those cryopreserved with WPE (2.02) was similar (Fig. 3B), whereas it was lower for cells cryopreserved with DMSO (1.69).

The basal activity of isoform CYP2D2 after 3 days in culture was higher for hepatocytes that were cryopreserved with DMSO than for fresh cells and those cryopreserved with WPE (Fig. 4A). CYP2D2 activity was increased by dextromethorphan in fresh and WPE-cryopreserved cells (Fig. 4A), whereas it decreased in cells that were cryopreserved with DMSO. The increase in enzymatic activity for fresh and WPE-cryopreserved cells was similar (4.57, 15 min) (Fig. 4B), whereas that for cells cryopreserved with DMSO was much lower (0.41, 15 min).

For the isoforms CYP1A1/2, the basal activities after 3 days in culture were similar for cryopreserved cells but lower than in fresh hepatocytes (Fig. 5A). After induction with benzo[a]pyrene, the levels of CYP1A1/2 activity were higher for hepatocytes that were cryopreserved with WPE compared with DMSO but lower than in fresh cells. The induced enzymatic activities for cells that were cryopreserved with DMSO (24.31, 15 min) and WPE (22.29) were higher than for fresh hepatocytes (17.68) (Fig. 5B).

For hepatocytes that were cryopreserved with WPE, basal activity for the isoform CYP2C6 after 3 days in culture was similar to fresh hepatocytes after 15 min but slightly lower after 30 min (Fig. 6A). However, activity was lower for cells cryopreserved with DMSO when compared with WPE. After induction with phenobarbital, CYP2C6 activity showed the same trend as for basal activity (Fig. 6B). The induced enzymatic activities for fresh (4.56, 15 min) and WPE-cryopreserved hepatocytes (4.41, 15 min) were similar, whereas that for DMSO-cryopreserved cells was lower (3.39) (Fig. 6B).

In general, the rates of induction of activities for the P450 isoforms were similar when fresh hepatocytes and those cryopreserved with WPE were cultured for 3 days in regular plastic dishes. Apart from CYP1A1/2, they were consistently lower in cells that had been cryopreserved with DMSO.

Matrigel-Coated Dishes. There was a general increase in activities of the four P450 isoforms for fresh and cryopreserved cells

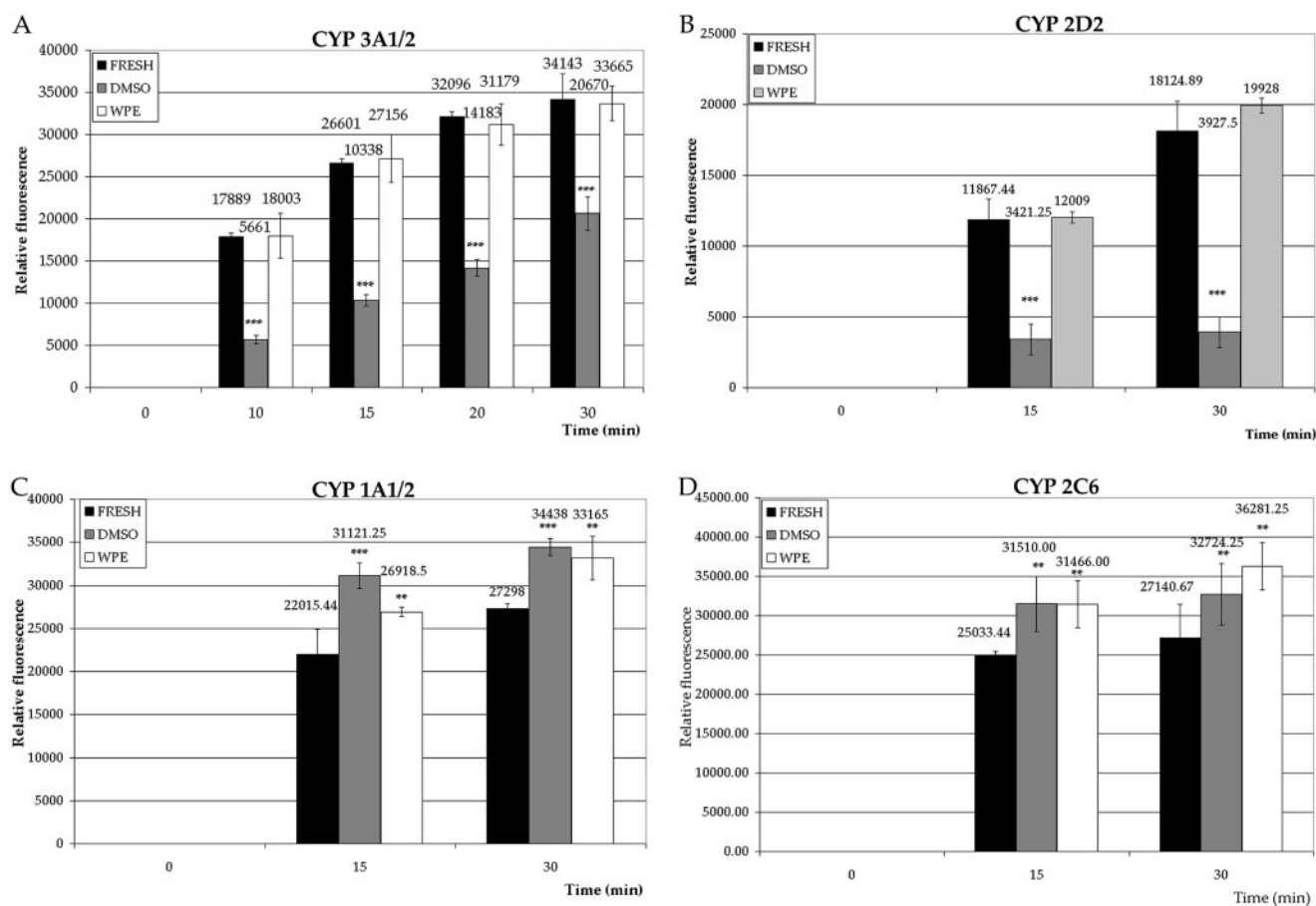


FIG. 2. Basal activity of four P450 isoforms in rat hepatocytes cryopreserved with WPE: comparison with DMSO-cryopreserved and fresh cells. Enzymatic activity of four P450 isoforms was evaluated using fluorescent probes in cell suspensions immediately post-thaw. A, CYP3A1/2: DFB. B, CYP2D2: AMMC. C, CYP1A1/2: CEC. D, CYP2C6: MFC. Freshly isolated hepatocytes (Fresh) served as reference. Data (mean \pm S.E.M.) represent duplicate measurements from four experiments with different cell preparations ($n = 8$). *, $P < 0.05$, **, $P < 0.01$, ***, $P < 0.001$.

when cultured on Matrigel-coated dishes (Figs. 3–6, C and D) compared with regular plastic dishes (Figs. 3–6, A and B). For the CYP3A1/2 isoforms, the basal activities and rates of induction of activity, after 3 days of culture on Matrigel-coated dishes (Fig. 3, C and D), were qualitatively similar to those observed for hepatocytes that were cultured in regular plastic dishes (Fig. 3, A and B). The only difference was that activities and induced activities were approximately 2-fold higher for hepatocytes that had been cultured on Matrigel. The induced enzymatic activities for cells that were cryopreserved with WPE (4.21, 5 min) were again similar to fresh hepatocytes (4.54) and higher than for those cryopreserved with DMSO (3.3) (Fig. 3D).

The basal activities of the isoform CYP2D2 after 3 days of culture on Matrigel matrix were similar for cryopreserved and fresh hepatocytes (Fig. 4C). When cells were treated with dextromethorphan, metabolic activities for CYP2D2 were also similar after 15 min, but after 30 min, activity in fresh cells was higher than for the other cell types (Fig. 4C). The increases in enzymatic activities were similar for fresh and WPE-cryopreserved cells (4.85 and 5.10, 15 min) but higher than for those cryopreserved with DMSO (4.19) (Fig. 4D). However, in contrast to culture on plastic dishes, the activity of CYP2D2 was restored when DMSO-cryopreserved hepatocytes were cultured on Matrigel surfaces (Fig. 4, B and D).

The basal activities of isoforms CYP1A1/2 were similar for cryopreserved and fresh hepatocytes after 3 days of culture on the Matrigel matrix (Fig. 5C). After induction with benzo[a]pyrene, CYP1A1/2

activity was lower in cells that were cryopreserved with WPE when compared with fresh hepatocytes but still higher than for those cryopreserved with DMSO (Fig. 5C). The induced enzymatic activity for cells cryopreserved with WPE (42.43, 15 min) was similar to that of fresh hepatocytes (39.21) but again higher than for those cryopreserved with DMSO (31.76) (Fig. 5D).

For isoform CYP2C6, the basal and phenobarbital-induced activities, after 3 days of culture on Matrigel-coated dishes (Fig. 6C), were qualitatively similar to those observed for hepatocytes that were cultured in uncoated dishes (Fig. 6A). The induced enzymatic activities for fresh (5.29) and cryopreserved hepatocytes (WPE, 4.93; DMSO, 5.28) were similar (Fig. 6D).

These results show that the culture of fresh and cryopreserved hepatocytes on Matrigel-coated dishes improves the basal and induced or metabolic activities of the four P450 isoforms. There was a notable improvement in activity of CYP2D2 for DMSO-cryopreserved cells that were cultured on Matrigel matrix compared with uncoated surfaces. Again, when hepatocytes were cultured for 3 days in Matrigel-coated dishes, the induced or metabolic activities of the four P450 isoforms in fresh and WPE-cryopreserved hepatocytes were similar, whereas they were generally lower in cells cryopreserved with DMSO. Together, these findings show that cryopreservation of hepatocytes with WPE is clearly advantageous and comparable with fresh hepatocytes, in terms of preserving activities of the four major P450 isoforms when compared with the DMSO standard.

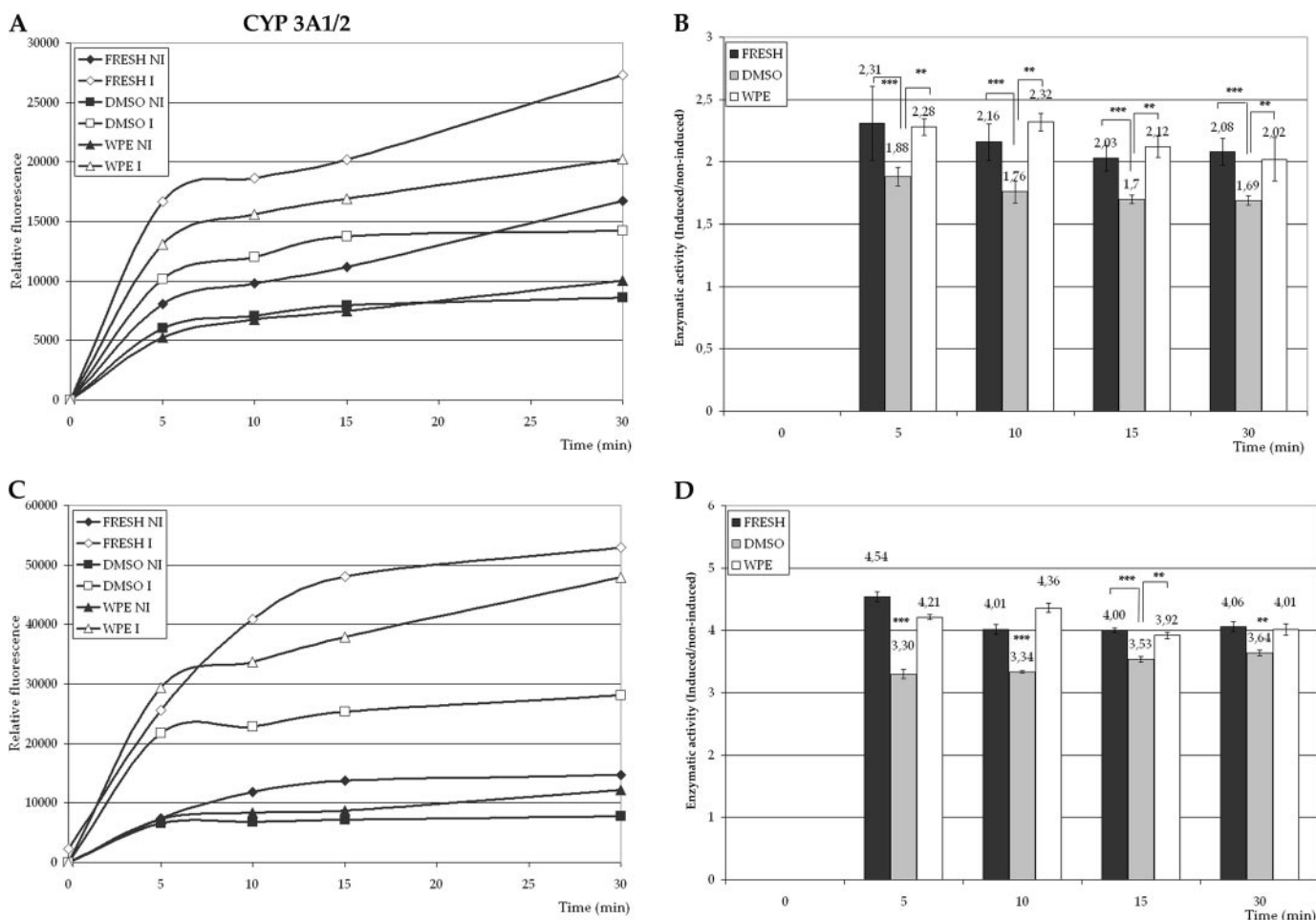


FIG. 3. Effect of cryopreservation of rat hepatocytes with WPE on metabolic activity of P450 isoform CYP3A1/2. Rat hepatocytes were cryopreserved for 7 days in WME supplemented with 15% DMSO and 50% FBS (DMSO) or 60 mg of WPE. Hepatocytes were thawed and seeded in culture for 24 h. Dexamethasone was then used to induce P450 activity during 48 h. Enzymatic activity of CYP3A1/2 was evaluated using DFB for hepatocytes in culture on regular plastic dishes and expressed as relative fluorescence (A) and I/Ni activity (B). Relative fluorescence (C) and I/Ni (D) activity are shown for cells in culture on Matrigel-coated dishes. Freshly isolated hepatocytes (Fresh) were cultured for 72 h and served as reference. Data (mean \pm S.E.M.) represent duplicate measurements from four experiments with different cell preparations ($n = 8$). *, $P < 0.05$, **, $P < 0.01$, ***, $P < 0.001$.

Discussion

We previously reported that WPE is an efficient cryoprotective agent for primary cultures of rat hepatocytes (Hamel et al., 2006). Cryopreservation of hepatocytes with WPE retained adequate viability, attachment efficiencies, hepatospecific functions such as albumin secretion and biotransformation of ammonium to urea, and capacity to respond to inducers of CYP1A1 and CYP2B (Hamel et al., 2006). The significant new findings in this study are that, on thawing, the activities of four major drug-metabolizing enzymes of the P450 family are similar in rat hepatocytes that were cryopreserved with WPE and freshly isolated cells. When cells cryopreserved with WPE were cultured as attached monolayers for 3 days on thawing, metabolic activities of the P450 isoforms CYP3A1/2, CYP2D2, and CYP2C6 in response to classical P450 inducers were equivalent to those in fresh hepatocytes but slightly higher for CYP1A1/2. Basal enzymatic activities of the four P450 isoforms were similar in suspensions of fresh and WPE-cryopreserved hepatocytes.

The drug discovery process uses hepatocytes in suspension and in monolayer cultures. Because of their limited lifespan (approximately 5 h), suspension cultures of hepatocytes can be used for applications in the early drug discovery process such as hepatic metabolic stability, P450 inhibition, and drug transporter activities (Li, 2007). However,

P450 induction studies remain the "gold standard" for detecting drug-drug interactions, which are required by the Food and Drug Administration. The evaluation of P450 induction requires the use of monolayer cultures of hepatocytes ("plateable" hepatocytes) that can be maintained in culture for 2 to 3 days. Cryopreservation with WPE could be a valuable tool in drug discovery because hepatocytes retained activity of the four P450 isoforms both in suspension and in monolayer culture.

Our findings show that the activities of the four P450 isoforms were markedly increased when cryopreserved and fresh hepatocytes were cultured on dishes pretreated with an attachment substrate such as Matrigel. The Matrigel matrix is a basement membrane preparation that contains extracellular matrix proteins such as laminin, collagen IV, and entactin. It provides a physiologically relevant environment that better reflects the in vivo context. For culture on Matrigel, activities of the four P450 isoforms were similar in fresh cells and those cryopreserved with WPE, whereas they were lower in cells cryopreserved with DMSO, with the exception of CYP2C6.

There were marked differences in morphology when hepatocytes were cultured on Matrigel matrix versus plastic surfaces. Differences were more pronounced for fresh than cryopreserved hepatocytes. However, hepatocytes that were cryopreserved with WPE or DMSO

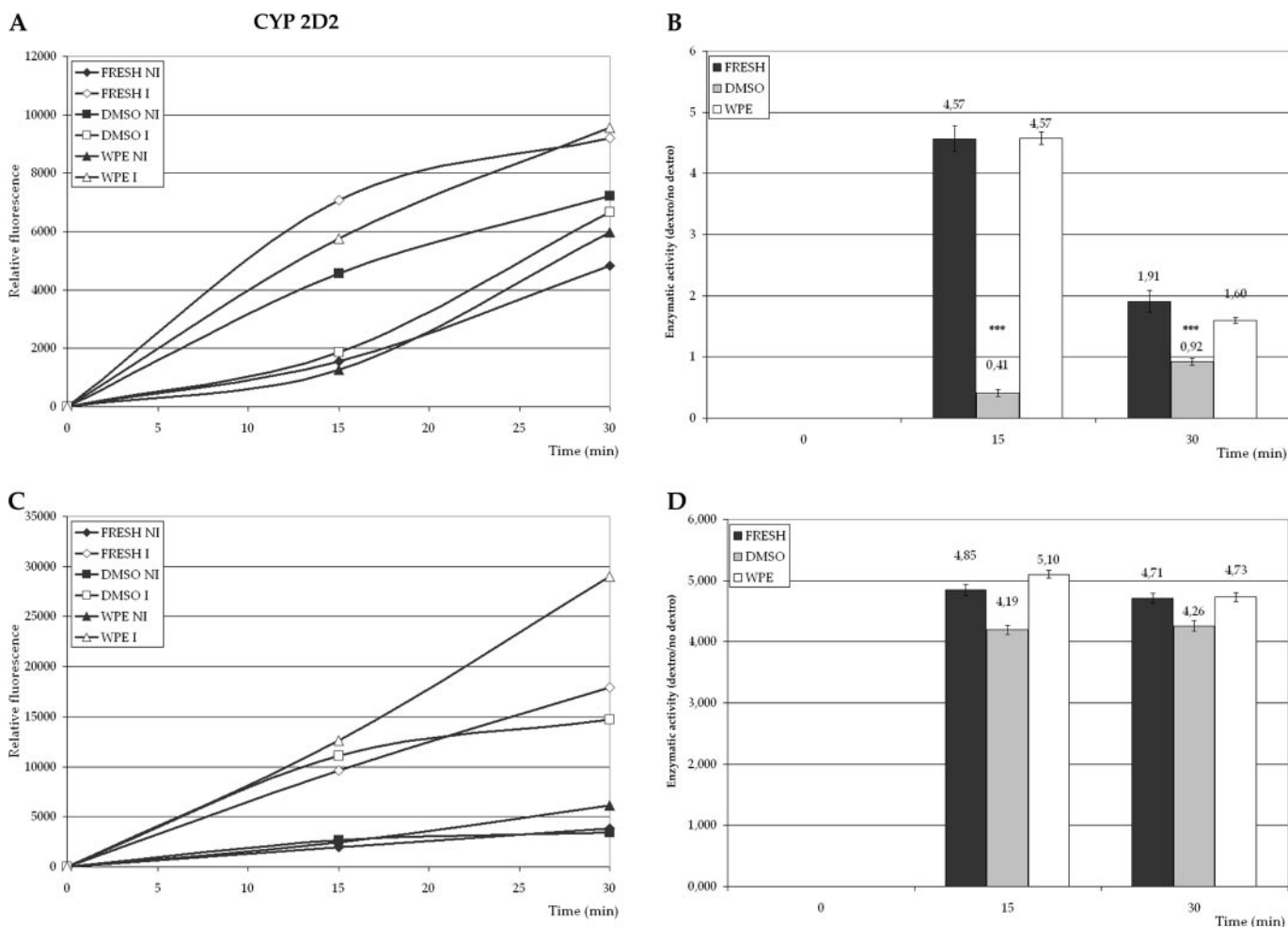


FIG. 4. Metabolic activity of P450 isoform CYP2D2 in hepatocytes cryopreserved with WPE. Rat hepatocytes were cryopreserved for 7 days in WME supplemented with 15% DMSO and 50% FBS (DMSO) or 60 mg of WPE. Hepatocytes were thawed and seeded in culture for 24 h. Dexamethorphan (Dextro) was then used to increase metabolic activity during 48 h. Enzymatic activity of CYP2D2 was evaluated using AMMC for hepatocytes in culture on regular plastic dishes and expressed as relative fluorescence (A) and enzymatic activity (dextro/no dextro) (B). Relative fluorescence (C) and enzymatic activity (dextro/no dextro) (D) are shown for cells in culture on Matrigel-coated dishes. Freshly isolated hepatocytes (Fresh) were cultured for 72 h and served as reference. Data (mean \pm S.E.M.) represent duplicate measurements from four experiments with different cell preparations ($n = 8$). *, $P < 0.05$, **, $P < 0.01$, ***, $P < 0.001$.

maintained a rounded morphology on both plastic and Matrigel surfaces. An important point is that the rounded morphology did not affect responses of cells that had been cryopreserved with WPE to classical P450 inducers.

The attachment efficiencies of hepatocytes that had been cryopreserved with WPE or DMSO were 50% compared with freshly isolated hepatocytes when cultured as monolayers on both plastic and Matrigel-coated surfaces. One of the major limitations of hepatocyte cryopreservation is that low attachment efficiencies are obtained on thawing (Li et al., 1999; Li, 2007). Attachment efficiencies for DMSO-cryopreserved hepatocytes from various animal species are generally in the range of 50% compared with fresh cells (Chesné and Guillouzo, 1988; Chesné et al., 1993). Attachment efficiencies are even lower (5–40%) for “plateable” cryopreserved human hepatocytes (Zvibel et al., 2002; Terry et al., 2006c). This is a major problem because cell adhesion and cell-cell contacts have an impact on metabolic activities and functional integrity of hepatocytes. Despite the low attachment efficiencies, cryopreserved rat hepatocytes can still be cultured as reliably as freshly isolated hepatocytes. Several studies have shown that rat, mouse, and human hepatocytes can retain adequate viability and metabolic competency following cryopreservation with DMSO (de Sousa et al., 1996; Guillouzo et al., 1999).

Our findings show that the induced or metabolic activities of P450 isoforms in cells that were cryopreserved with WPE were consistently similar to those observed in freshly isolated hepatocytes. However, induction of P450 activity in cells cryopreserved with DMSO was equivalent or slightly lower compared with WPE or fresh cells. Our findings suggest that WPE is a more suitable cryopreservant for primary hepatocyte cultures than DMSO.

Activities of the phase II enzymes, UDP glucuronosyltransferases and sulfotransferases, were well preserved in rat hepatocytes that were cryopreserved with DMSO (Hewitt and Utesch, 2004). On the other hand, glutathione *S*-transferase and glutathione reductase activities of cryopreserved human hepatocytes were reduced to less than 40% of the enzyme activity of fresh hepatocytes (Coundouris et al., 1993). Drug transporter activities were also well preserved in cryopreserved rat hepatocytes (Houle et al., 2003). P450 enzymes such as CYP3A, CYP2C, and CYP2D were generally well preserved in hepatocytes after cryopreservation with DMSO (Shaddock et al., 1993; de Sousa et al., 1996; Hengstler et al., 2000a,b; Houle et al., 2003; Hewitt and Utesch, 2004). However, CYP2C activity (tolbutamide hydroxylase activity) in suspensions of cells that were cryopreserved with DMSO was lower compared with fresh cells (Hewitt and Utesch, 2004). It

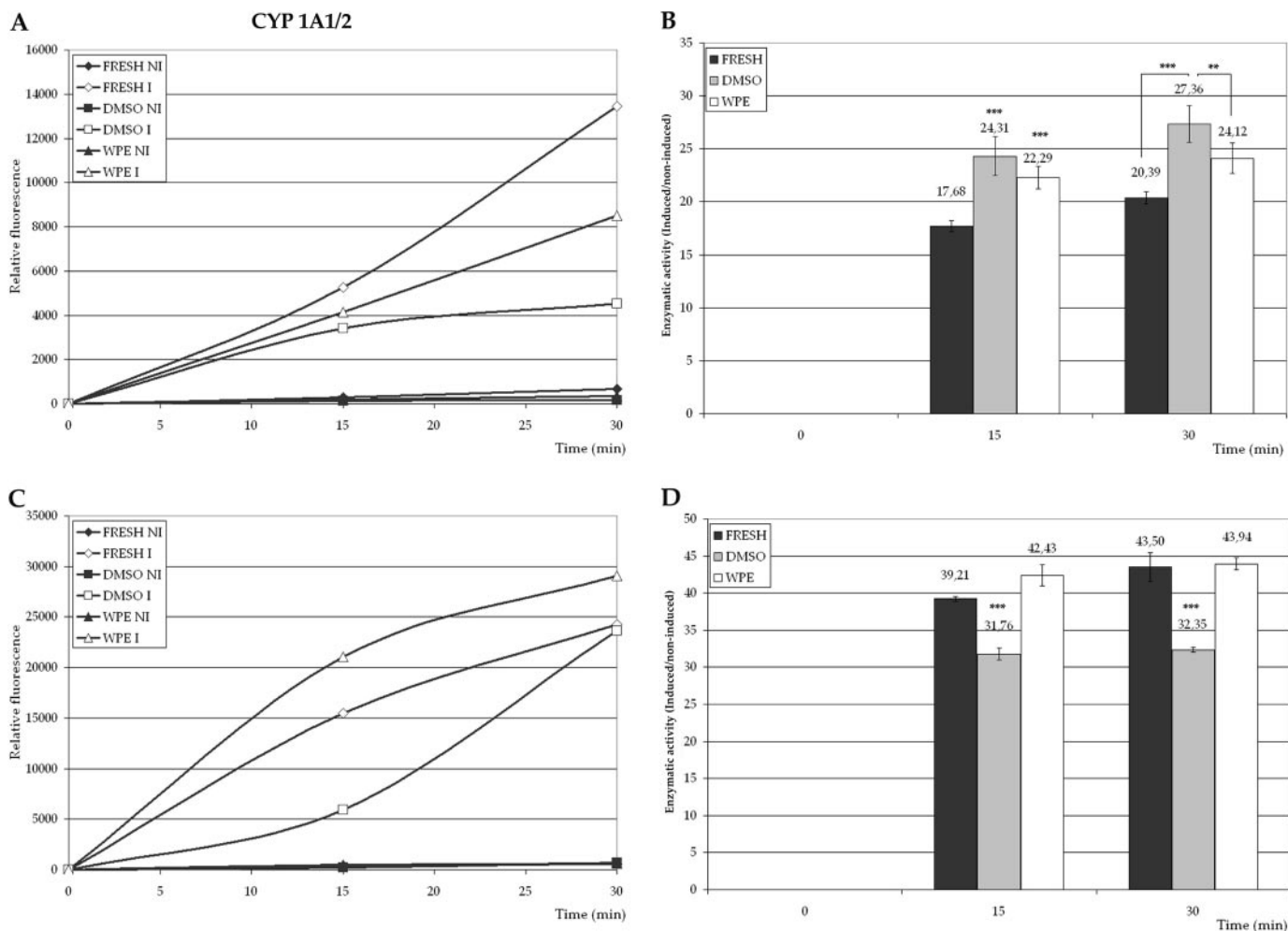


FIG. 5. Metabolic activity of P450 isoform CYP1A1/2 in cryopreserved rat hepatocytes: effects of WPE. Rat hepatocytes were cryopreserved for 7 days in WME supplemented with 15% DMSO and 50% FBS (DMSO) or 60 mg of WPE. Hepatocytes were thawed and seeded in culture for 24 h. Benzo[a]pyrene was then used to induce P450 activity during 48 h. Enzymatic activity of CYP1A1/2 was evaluated using CEC for hepatocytes in culture on regular plastic dishes and expressed as relative fluorescence (A) and I/N1 activity (B). Relative fluorescence (C) and I/N1 activity (D) are shown for cells in culture on Matrigel-coated dishes. Freshly isolated hepatocytes (Fresh) hepatocytes were cultured for 72 h and served as reference. Data (mean \pm S.E.M.) represent duplicate measurements from four experiments with different cell preparations ($n = 8$). *, $P < 0.05$, **, $P < 0.01$, ***, $P < 0.001$.

was reported that low temperatures can induce conformational changes in the structure of P450 (Nardid et al., 1997).

Cryopreserved hepatocytes are often less responsive to enzyme-inducing agents than fresh hepatocytes (Terry et al., 2006a). Rifampicin induced testosterone metabolism by 4.5-fold in fresh hepatocytes but only 2-fold in cryopreserved cells (Reinach et al., 1999). Previous studies reported that hepatocytes were responsive to CYP1A and CYP3A inducers following cryopreservation with DMSO (Reinach et al., 1999; Silva et al., 1999). However, the specific activity, after induction, was lower than in freshly isolated cells.

Classical agents such as DMSO are used to protect cells from dehydration caused by the formation of intracellular ice during cryopreservation and to minimize potential damage resulting from osmotic imbalance. However, DMSO causes membrane damage and is toxic to hepatocytes, particularly at temperatures such as 25°C and 37°C, and must be removed rapidly from contact with cells during post-thaw processing (Terry et al., 2006b). DMSO causes structural and metabolic impairment of hepatocytes and compromises their ability to respond to enzyme-inducing agents and hormones (Diener et al., 1993). Therefore, hepatocytes cryopreserved with DMSO do not display the metabolic state of fresh cells, and their use can lead to erroneous interpretation of results. Therefore, it is important to de-

velop nontoxic alternatives to replace DMSO as a cryopreservation agent, particularly for sensitive cell types such as hepatocytes.

We previously showed that cryoprotective activity appears to be specific to proteins in wheat extracts because other proteins such as bovine serum albumin, *Escherichia coli* proteins, or FBS did not show any cryoprotective activity in hepatocytes (Hamel et al., 2006). However, the cryoprotective activity of proteins in extracts from other types of plants cannot be ruled out.

The higher cryopreservation capacity of WPE compared with DMSO is probably explained by protective effects of WPE against cryopreservation-induced degradation of membrane proteins by unknown processes. Overwintering plants such as the hardy winter wheat genotype (*T. aestivum* L. cv Clair) accumulate protective compounds that ensure survival of the plant during freezing. These protective compounds include sugars (glucose, fructose, sucrose, and trehalose), antioxidants, amino acids, and proteins such as antifreeze proteins and dehydrins. These proteins have the potential to protect cells against dehydration caused by freezing. The wheat proteins may agglutinate at the plasma membrane, thus decreasing the aqueous flow whose regulation is very important to minimize degradation and avoid the loss of viability. These proteins may also protect cells against damage by stabilizing proteins and membranes during freezing.

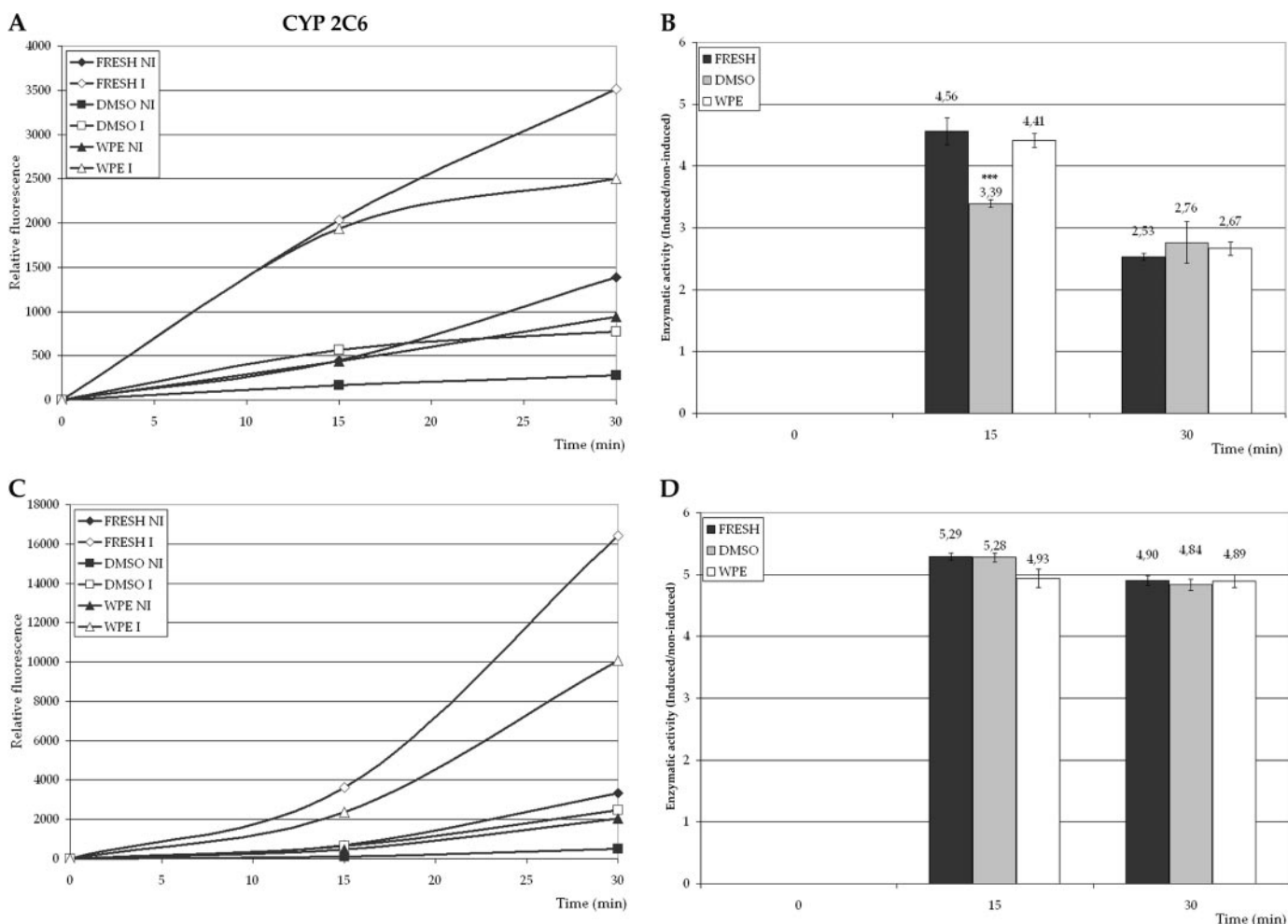


FIG. 6. Effects of cryopreservation with WPE on metabolic activity of P450 isoform CYP2C6. Rat hepatocytes were cryopreserved for 7 days in WME supplemented with 15% DMSO and 50% FBS (DMSO) or 60 mg of WPE. Hepatocytes were thawed and seeded in culture for 24 h. Phenobarbital was then used to induce P450 activity during 48 h. Enzymatic activity of CYP2C6 was evaluated using MFC for hepatocytes in culture on regular plastic dishes and expressed as relative fluorescence (A) and I/NI activity (B). Relative fluorescence (C) and I/NI activity (D) are shown for cells in culture on Matrigel-coated dishes. Freshly isolated hepatocytes (Fresh) were cultured for 72 h and served as reference. Data (mean \pm S.E.M.) represent duplicate measurements from four experiments with different cell preparations ($n = 8$). *, $P < 0.05$, **, $P < 0.01$, ***, $P < 0.001$.

This study conclusively shows that rat hepatocytes cryopreserved with WPE retain their metabolic competency and their ability to respond to classical P450 inducers on thawing when compared with freshly isolated hepatocytes. Viability and P450 metabolic studies were also carried out using hepatocytes from different rats that were cryopreserved with different lots of WPEs for longer periods of time, ranging from several months up to a maximum of 4 years. Similar data were obtained whether hepatocytes were cryopreserved for 7 days, several months, or 4 years (data not shown). These findings clearly show that WPE is an excellent cryopreservant for long-term storage of primary hepatocytes. They are an efficient, nontoxic, economic natural product and universal cryoprotectant that is superior to DMSO, which has limitations because of cellular toxicity. This technology is highly relevant to the drug discovery process and will be validated in human hepatocytes. During recent years, hepatocytes isolated from unused donor livers are used for clinical transplantation in patients with acute liver failure and liver-based metabolic defects. Development and optimization of cryopreservation protocols for human hepatocytes will provide a solution to increase the availability of hepatocytes with good thawed function for their use in transplantation (Terry et al., 2006a).

Acknowledgments. We thank Michel Marion and Denis Flipo for technical assistance.

References

- Chesn  C and Guillouzo A (1988) Cryopreservation of isolated rat hepatocytes: a critical evaluation of freezing and thawing conditions. *Cryobiology* **25**:323–330.
- Chesn  C, Guyonard C, Fautrel A, Poullain MG, Fremont B, De Jong H, and Guillouzo A (1993) Viability and function in primary culture of adult hepatocytes from various animal species and human beings after cryopreservation. *Hepatology* **18**:406–414.
- Coundouris JA, Grant MH, Engeset J, Petrie JC, and Hawksworth GM (1993) Cryopreservation of human adult hepatocytes for use in drug metabolism and toxicity studies. *Xenobiotica* **23**:1399–1409.
- Danyluk J, Perron A, Houde M, Limin A, Fowler B, Benhamou N, and Sarhan F (1998) Accumulation of an acidic dehydrin in the vicinity of the plasma membrane during cold acclimation of wheat. *Plant Cell* **10**:623–638.
- de Sousa G, Langouet S, Nicolas F, Lorenzon G, Placidi M, Rahmani R, and Guillouzo A (1996) Increase of cytochrome P-450 1A and glutathione transferase transcripts in cultured hepatocytes from dogs, monkeys, and humans after cryopreservation. *Cell Biol Toxicol* **12**:351–358.
- Diener B, Utesch D, Beer N, Durk H, and Oesch F (1993) A method for the cryopreservation of liver parenchymal cells for studies of xenobiotics. *Cryobiology* **30**:116–127.
- G mez-Lech n MJ, Donato T, Ponsoda X, and Castell JV (2003) Human hepatic cell cultures: in vitro and in vivo drug metabolism. *Altern Lab Anim* **31**:257–265.
- Grant MH, Melvin MA, Shaw P, Melvin WT, and Burke MD (1985) Studies on the maintenance of cytochromes P-450 and b5, monooxygenases and cytochrome reductases in primary cultures of rat hepatocytes. *FEBS Lett* **190**:99–103.
- Greaves P, Williams A, and Eve M (2004) First dose of potential new medicines to humans: how animals help. *Nat Rev Drug Discov* **3**:226–236.
- Guillemette J, Marion M, Denizeau F, Fournier M, and Brousseau P (1993) Characterization of the in vitro hepatocyte model for toxicological evaluation: repeated growth stimulation and glutathione response. *Biochem Cell Biol* **71**:7–13.

- Guillouzo A, Rialland L, Fautrel A, and Guyomard C (1999) Survival and function of isolated hepatocytes after cryopreservation. *Chem Biol Interact* **121**:7–16.
- Hamel F, Grondin M, Denizeau F, Averill-Bates DA, and Sarhan F (2006) Wheat extracts as an efficient cryoprotective agent for primary cultures of rat hepatocytes. *Biotechnol Bioeng* **95**:661–670.
- Hengstler JG, Ringel M, Biefang K, Hammel S, Milbert U, Gerl M, Klebach M, Diener B, Platt KL, Bottger T, et al. (2000a) Cultures with cryopreserved hepatocytes: applicability for studies of enzyme induction. *Chem Biol Interact* **125**:51–73.
- Hengstler JG, Utesch D, Steinberg P, Platt KL, Diener B, Ringel M, Swales N, Fischer T, Biefang K, Gerl M, et al. (2000b) Cryopreserved primary hepatocytes as a constantly available in vitro model for the evaluation of human and animal drug metabolism and enzyme induction. *Drug Metab Rev* **32**:81–118.
- Hewitt NJ and Utesch D (2004) Cryopreserved rat, dog and monkey hepatocytes: measurement of drug metabolizing enzymes in suspensions and cultures. *Hum Exp Toxicol* **23**:307–316.
- Houle R, Raoul J, Levesque JF, Pang KS, Nicoll-Griffith DA, and Silva JM (2003) Retention of transporter activities in cryopreserved, isolated rat hepatocytes. *Drug Metab Dispos* **31**:447–451.
- Lazarou J, Pomeranz BH, and Corey PN (1998) Incidence of adverse drug reactions in hospitalized patients: a meta-analysis of prospective studies. *JAMA* **279**:1200–1205.
- Li AP (2007) Human hepatocytes: isolation, cryopreservation and applications in drug development. *Chem Biol Interact* **168**:16–29.
- Li AP, Gorycki PD, Hengstler JG, Kedderis GL, Koebe HG, Rahmani R, de Sousas G, Silva JM, and Skett P (1999) Present status of the application of cryopreserved hepatocytes in the evaluation of xenobiotics: consensus of an international expert panel. *Chem Biol Interact* **121**:117–123.
- Moffatt P, Plaa GL, and Denizeau F (1996) Rat hepatocytes with elevated metallothionein expression are resistant to N-methyl-N'-nitro-N-nitrosoguanidine cytotoxicity. *Toxicol Appl Pharmacol* **136**:200–207.
- Moldeus P, Hogberg J, and Orrenius S (1978) Isolation and use of liver cells. *Methods Enzymol* **52**:60–71.
- Nardid O, Dyubko T, and Repina S (1997) A comparative study of the effect of freeze-thawing on peripheral and integral membrane proteins. *Cryobiology* **34**:107–113.
- Nicoll-Griffith DA, Chaurat N, Houle R, Day SH, D'Antoni M, and Silva JM (2004) Use of a benzyloxy-substituted lactone cyclooxygenase-2 inhibitor as a selective fluorescent probe for CYP3A activity in primary cultured rat and human hepatocytes. *Drug Metab Dispos* **32**:1509–1515.
- O'Brien PJ and Siraki AG (2005) Accelerated cytotoxicity mechanism screening using drug metabolizing enzyme modulators. *Curr Drug Metab* **6**:101–109.
- Olfert ED, Cross BM, and McWilliams AA (1993) *Guide to the care and use of experimental animals*, Canadian Council on Animal Care, Ottawa, Canada.
- Paine AJ (1990) The maintenance of cytochrome P-450 in rat hepatocyte culture: some applications of liver cell cultures to the study of drug metabolism, toxicity and the induction of the P-450 system. *Chem Biol Interact* **74**:1–31.
- Reader S, Marion M, and Denizeau F (1993) Flow cytometric analysis of the effects of tri-n-butyltin chloride on cytosolic free calcium and thiol levels in isolated rainbow trout hepatocytes. *Toxicology* **80**:117–129.
- Reinach B, de Sousa G, Dostert P, Ings R, Gugenheim J, and Rahmani R (1999) Comparative effects of rifabutin and rifampicin on cytochromes P450 and UDP-glucuronosyl-transferases expression in fresh and cryopreserved human hepatocytes. *Chem Biol Interact* **121**:37–48.
- Seglen PO (1976) Preparation of isolated rat liver cells. *Methods Cell Biol* **13**:29–83.
- Shaddock JG, Snawder JE, and Casciano DA (1993) Cryopreservation and long-term storage of primary rat hepatocytes: effects on substrate-specific cytochrome P450-dependent activities and unscheduled DNA synthesis. *Cell Biol Toxicol* **9**:345–357.
- Silva JM, Day SH, and Nicoll-Griffith DA (1999) Induction of cytochrome-P450 in cryopreserved rat and human hepatocytes. *Chem Biol Interact* **121**:49–63.
- Sistare FD and DeGeorge JJ (2007) Preclinical predictors of clinical safety: opportunities for improvement. *Clin Pharmacol Ther* **82**:210–214.
- Sivaraman A, Leach JK, Townsend S, Iida T, Hogan BJ, Stolz DB, Fry R, Samson LD, Tannenbaum SR, and Griffith LG (2005) A microscale in vitro physiological model of the liver: predictive screens for drug metabolism and enzyme induction. *Curr Drug Metab* **6**:569–591.
- Terry C, Bailey M, Mitry RR, Lehec SC, Dhawan A, and Hughes RD (2006a) Analysis of the effects of cryopreservation on rat hepatocytes using SELDI-TOF mass spectrometry. *Cell Transplant* **15**:35–43.
- Terry C, Dhawan A, Mitry RR, and Hughes RD (2006b) Cryopreservation of isolated human hepatocytes for transplantation: state of the art. *Cryobiology* **53**:149–159.
- Terry C, Dhawan A, Mitry RR, Lehec SC, and Hughes RD (2006c) Preincubation of rat and human hepatocytes with cytoprotectants prior to cryopreservation can improve viability and function upon thawing. *Liver Transpl* **12**:165–177.
- Utrecht J (2006) Evaluation of which reactive metabolite, if any, is responsible for a specific idiosyncratic reaction. *Drug Metab Rev* **38**:745–753.
- Zvibel I, Smets F, and Soriano H (2002) Anoikis: roadblock to cell transplantation? *Cell Transplant* **11**:621–630.

Address correspondence to: Diana A. Averill-Bates, Université du Québec à Montréal, Département des Sciences Biologiques, C.P. 8888, Succursale Centre-ville, Montréal, Québec, Canada H3C 3P8. E-mail: averill.diana@uqam.ca
